



Canton Public Schools

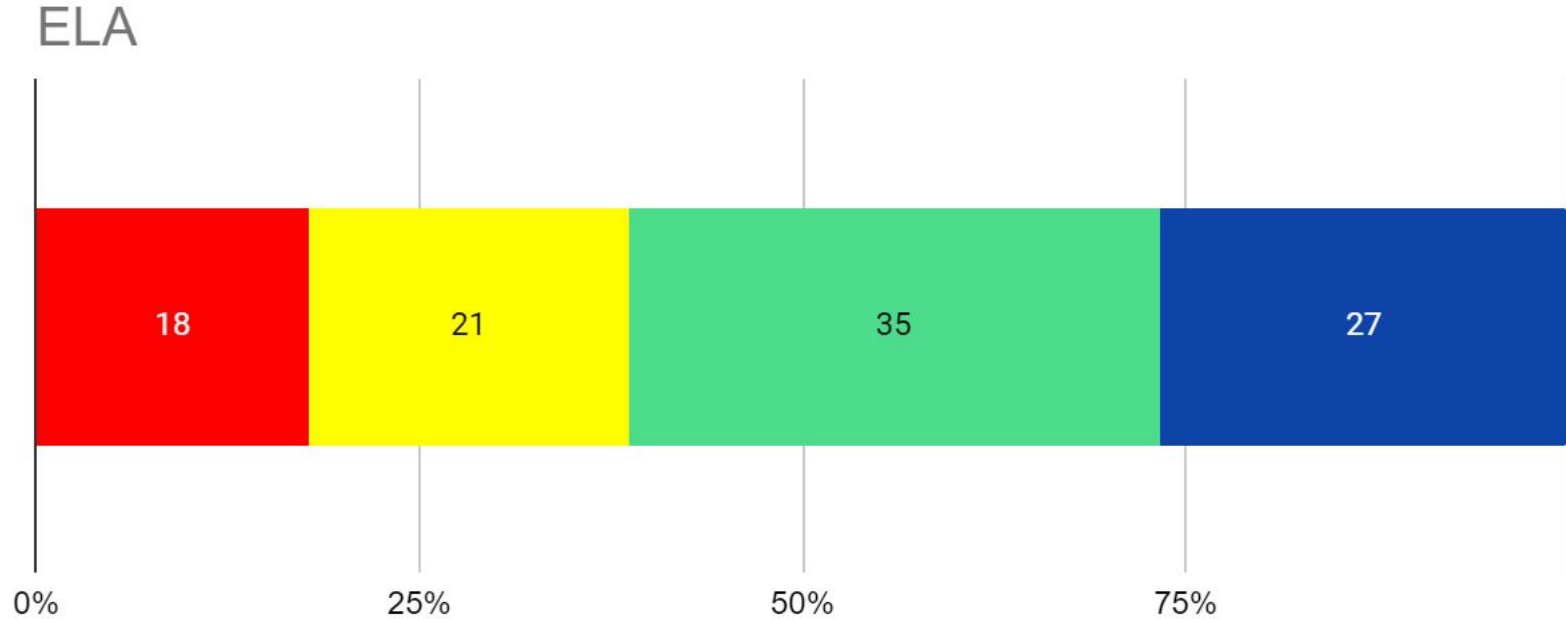
Opening Minds - Transforming Lives

**Preliminary Standardized Assessment Update
Fall 2023**

SBAC ELA Overall 22-23

Summative ELA - Grades 3-8

62% Proficient or Above



*measured in percent

RED - Standard Not Yet Met

YELLOW - Approaching Standard

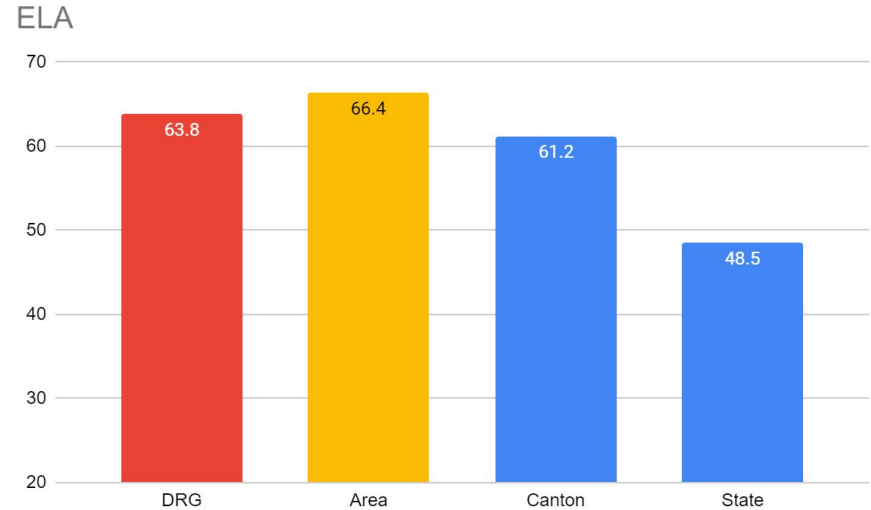
GREEN - Meets Standard

BLUE - Exceeds Standard

SBAC ELA Comparison - Fall 23

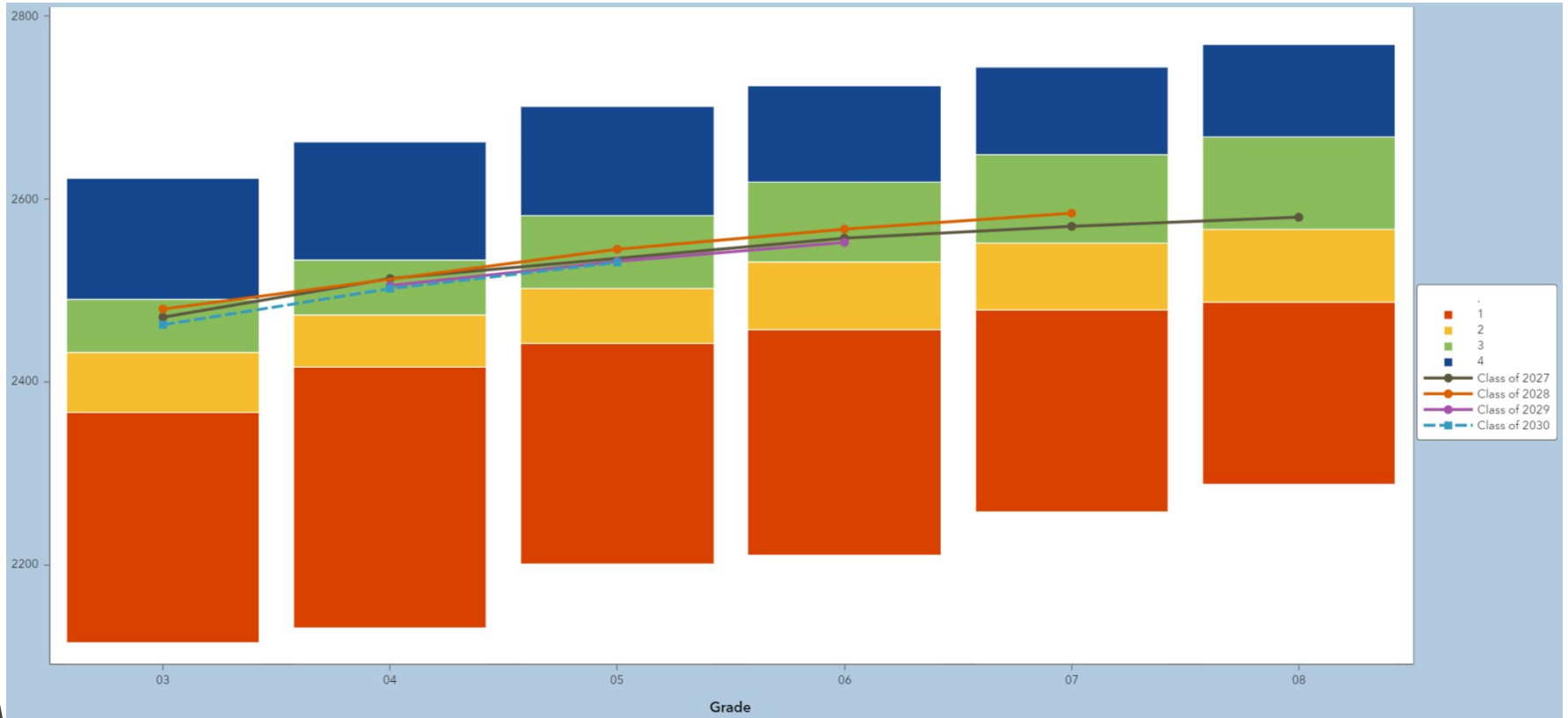
Number of students meeting or exceeding goal

Average DRG	63.8%
Average Area	66.4%
Canton	61.2%
State of Connecticut	48.5%



Area Reference Districts include Avon, Barkhamsted, Canton, Farmington, Granby, New Hartford/Region 7, Region 10, and Simsbury

SBAC ELA Performance Trend by Cohort

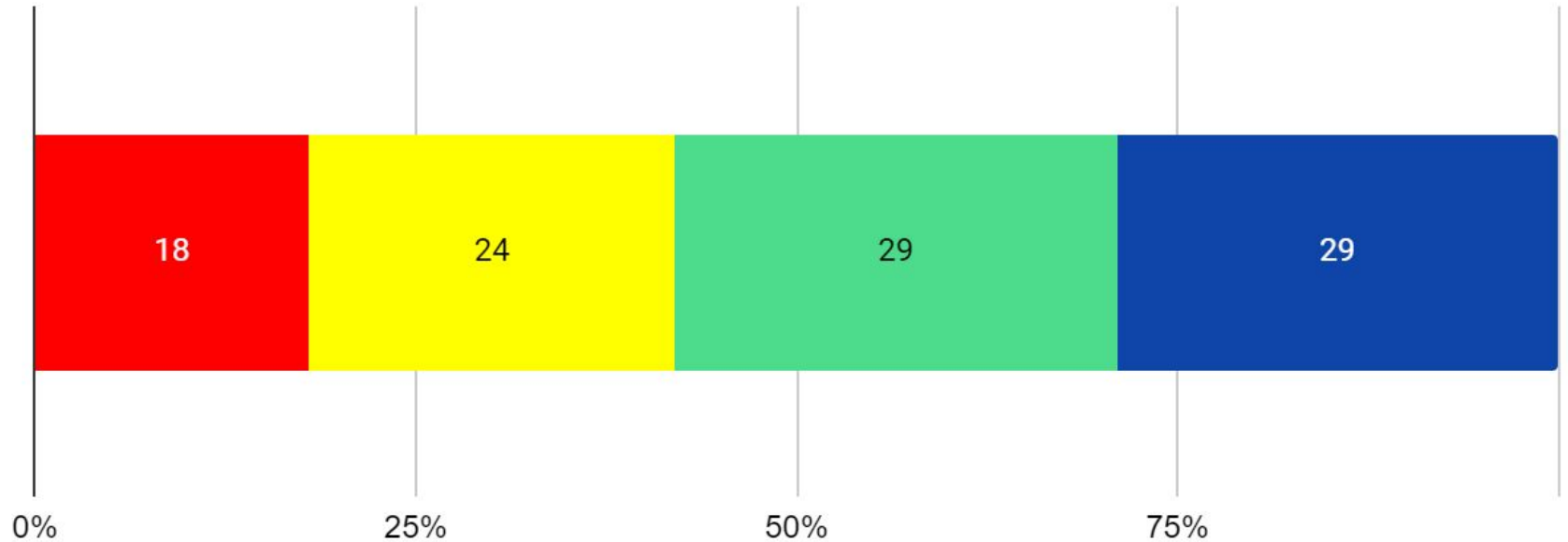


SBAC Math 22-23

Summative Mathematics - Grades 3-8

58% Proficient or Above

Mathematics



*measured in percent

RED - Standard Not Yet Met

YELLOW - Approaching Standard

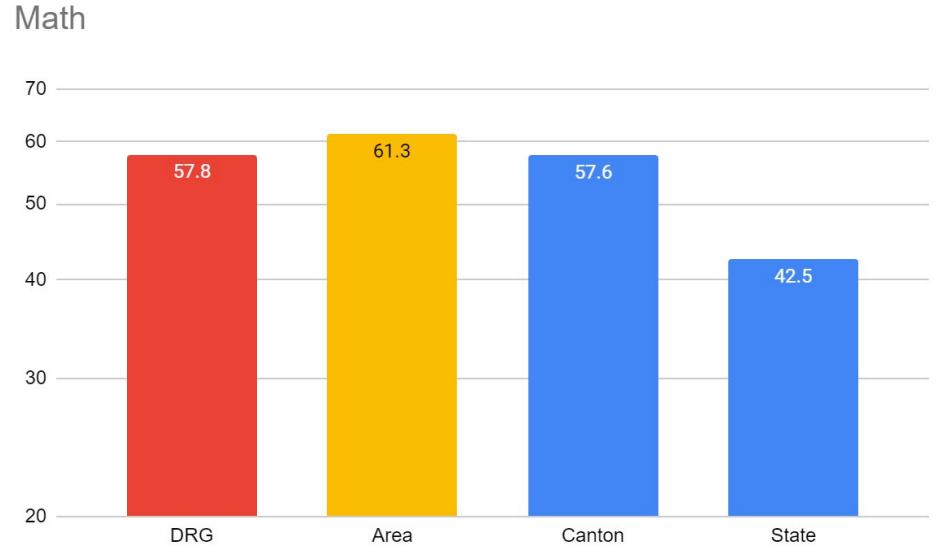
GREEN - Meets Standard

BLUE - Exceeds Standard

SBAC Math Comparison - Fall 23

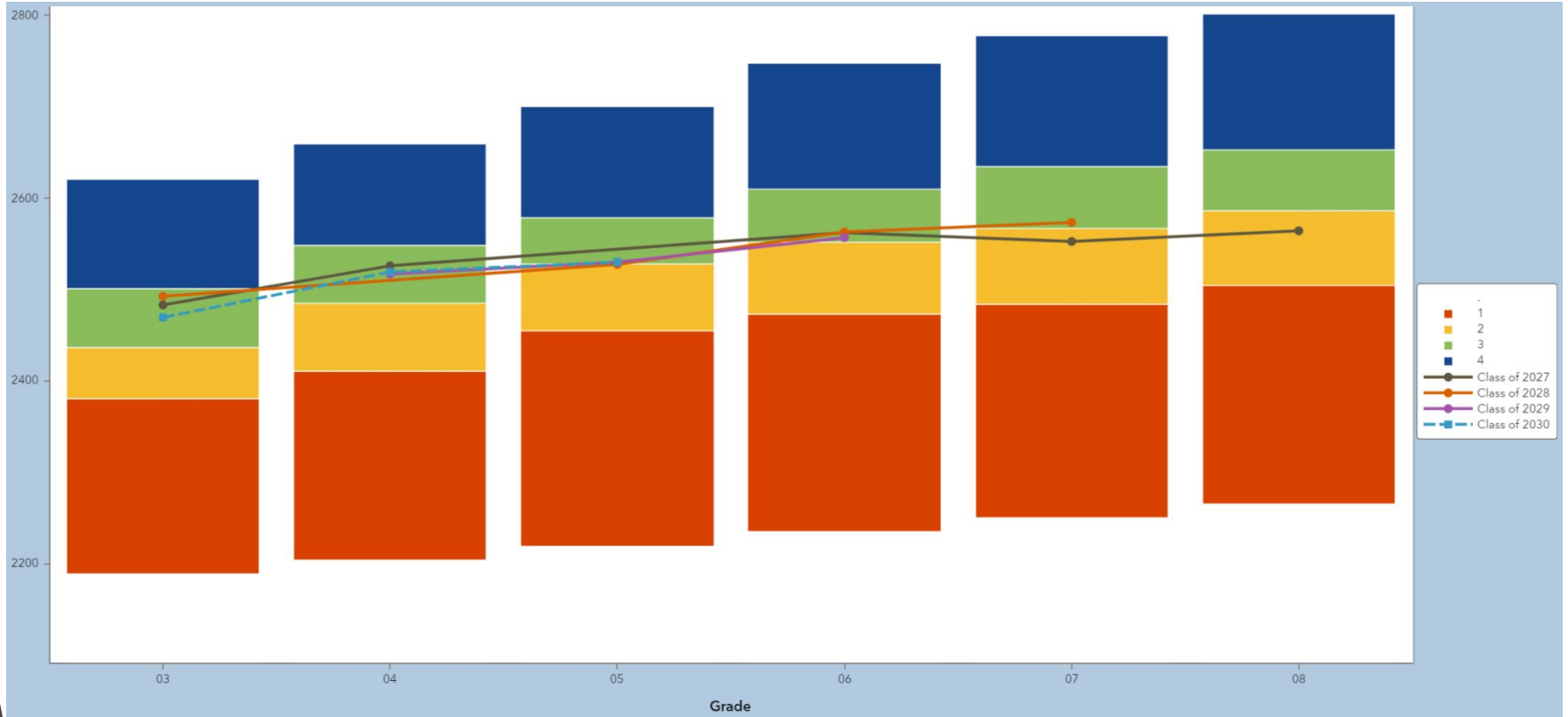
Number of students meeting or exceeding goal

Average DRG	57.8%
Average Area	61.3%
Canton	57.6%
State of Connecticut	42.5%



Area Reference Districts include Avon, Barkhamsted, Canton, Farmington, Granby, New Hartford/Region 7, Region 10, and Simsbury

SBAC Math Performance Trend by Cohort



STAR Reading Fall 22 - 23 Growth

School ▲	# of Students	Participation				Proficiency					
		No SGP Data ^a		Has SGP Data ^b		At/Above 50 SGP			Below 50 SGP		
		Total	%	Total	%	Total	%	Avg	Total	%	Avg
Canton High School	275	174	63%	101	37%	50	50%	69	51	50%	23
Canton Intermediate School	329	42	13%	287	87%	165	57%	75	122	43%	26
Canton Middle School	244	13	5%	231	95%	109	47%	73	122	53%	26
Cherry Brook Primary School	228	228	100%	0	0%	-	-	-	-	-	-
Summary	1076	457	42%	619	58%	324	52%	74	295	48%	26

Below PR may display a dash when the PR can't be calculated for the Below Average column.

School ▲	# of Students	Participation				Proficiency					
		No SGP Data ^a		Has SGP Data ^b		At/Above 50 SGP			Below 50 SGP		
		Total	%	Total	%	Total	%	Avg	Total	%	Avg
Canton High School	453	117	26%	336	74%	185	55%	78	151	45%	27
Canton Intermediate School	337	18	5%	319	95%	205	64%	77	114	36%	24
Canton Middle School	241	9	4%	232	96%	140	60%	75	92	40%	30
Cherry Brook Primary School	407	308	76%	99	24%	57	58%	76	42	42%	22
Summary	1435	452	31%	983	69%	586	60%	77	397	40%	25

Below PR may display a dash when the PR cannot be calculated for the Below Average column.

STAR Math Fall 22 - 23 Growth

School ↕	# of Students	Participation				Proficiency					
		No SGP Data*		Has SGP Data		At/Above 50 SGP			Below 50 SGP		
		Total	%	Total	%	Total	%	Avg	Total	%	Avg
Canton High School	275	173	63%	102	37%	58	57%	78	44	43%	27
Canton Intermediate School	329	37	11%	292	89%	159	54%	76	133	46%	26
Canton Middle School	244	10	4%	234	96%	126	54%	78	108	46%	28
Cherry Brook Primary School	228	228	100%	0	0%	-	-	-	-	-	-
Summary	1076	448	42%	628	58%	343	55%	77	285	45%	26

Below PR may display a dash when the PR can't be calculated for the Below Average column.

School ↕	# of Students	Participation				Proficiency					
		No SGP Data*		Has SGP Data		At/Above 50 SGP			Below 50 SGP		
		Total	%	Total	%	Total	%	Avg	Total	%	Avg
Canton High School	453	124	27%	329	73%	190	58%	77	139	42%	25
Canton Intermediate School	337	18	5%	319	95%	170	53%	75	149	47%	24
Canton Middle School	241	9	4%	232	96%	133	57%	76	99	43%	27
Cherry Brook Primary School	407	307	75%	100	25%	49	49%	75	51	51%	30
Summary	1435	458	32%	977	68%	540	55%	76	437	45%	25

Below PR may display a dash when the PR cannot be calculated for the Below Average column.